

Upholstery Collections

PEDRALI®

Material for upholstery and cushions

Rivestimenti per imbottiture e cuscini

Legend

Legenda

		FABRIC	FIRE RETARDANT FABRIC	OUTDOOR FABRIC	GENUINE HARD LEATHER	REGENERATED HARD LEATHER	LEATHER	SIMIL LEATHER	FIRE RETARDANT SIMIL LEATHER	VELVET	FIRE RETARDANT VELVET
category	card										
C	04, 05										
D	05, 07										
D outdoor	08, 09										
F	12										
G	01, 02, 03, 04, 05, 06, 13										
G outdoor	09										
H	06, 07, 10										
N	03, 07										
N outdoor	08										
P	11										



Fire-retardant
Ignifugo



Outdoor use
Adatto per uso esterno

washing / lavaggio

drying / asciugatura



Do not wash
Lavaggio a secco



Tumble dry at low temperature
Asciugatrice a bassa temperatura



Hand wash
Lavaggio a mano



Do not tumble dry
Non asciugare in asciugatrice



Wash at max 30°C normal
Lavaggio normale, max 30°C



Dry flat
Asciugare disteso



Wash at max 30°C mild
Lavaggio delicato, max 30°C



Do not wring
Non strizzare



Wash at max 40°C normal
Lavaggio normale, max 40°C



ironing / stiratura



Wash at max 60°C mild
Lavaggio delicato, max 60°C



Do not iron
Non stirare

dry cleaning / lavaggio a secco



Iron at low temperature
Stirare a bassa temperatura



Do not dry clean
Lavaggio a secco non consentito



Iron at medium temperature
Stirare a media temperatura



Dry clean, perchlorethylene (PCE)
Lavaggio a secco con percloroetilene (PCE)



bleaching / candeggio



Gentle dry cleaning with PCE
Lavaggio a secco delicato con PCE



Do not bleach
Non candeggiare



Any bleaching agent allowed
Candeggio consentito



Compliant to Ecolabel UE
environmental
requirements
Conforme ai requisiti
ambientali Ecolabel UE



Product certified for low
chemical emissions:
Prodotto certificato per basse
emissioni di sostanze chimiche:
UL.COM/GG
UL 2818



96/98/CE – 2010/68/UE
EU marine equipment rules
compliant
Conforme ai requisiti europei
per equipaggiamenti marittimi



Certified free of substances
harmful to human health and
the environment
Certificato per l'assenza di
sostanze nocive per la salute
umana e per l'ambiente.

Colours of samples are approximate. Pedrali S.p.A. reserves the right to modify or upgrade the products without prior notice.
I colori dei campioni sono indicativi. Pedrali S.p.A. si riserva la facoltà di apportare modifiche o migliorie senza alcun preavviso.

Fabrics

Tessuti

category G

PEDRALI®

FABRICS / TESSUTI



	G59÷G69 G190÷G197	G70÷G78
COMPOSITION COMPOSIZIONE	90% New wool 10% Nylon	90% New wool 10% Nylon
WEIGHT GRAMMATURA	550 g/m² (16.22 oz/yd²)	590 g/m² (17.38 oz/yd²)
ABRASION ABRASIONE	100.000 cycles Martindale (EN ISO 12947)	100.000 cycles Martindale (EN ISO 12947)
RUBBING FASTNESS SOLIDITÀ ALLO SFREGAMENTO	Dry and Wet 4-5, scale 1-5 (ISO 105-X12)	Dry and Wet 3-4, scale 1-5 (ISO 105-X12)
PILLING	4, scale 1-5 (EN ISO 12945)	3-4, scale 1-5 (EN ISO 12945)
LIGHT FASTNESS SOLIDITÀ ALLA LUCE	6-7, scale 1-8 (ISO 105-B02)	6, scale 1-8 (ISO 105-B02)
SOUND ABSORPTION ASSORBIMENTO ACUSTICO	folded: α_w =0.95 Class A (EN ISO 354)	folded: α_w =0.80 Class B (EN ISO 354)
FLAME RESISTANCE RESISTENZA AL FUOCO	AS/NZS 1530.3 AS/NZS 3837 Class 2 ASTM E84 Class B Adhered ASTM E84 Class B Unadhered BS 5852 Part 1 EN 1021 – 1/2 IMO FTP Code 2010: Part 8 NF D60-013 NFPA 260 ÖNORM B1/Q1 SN 198 898 5.3 with treatment UNI 9175 Classe 1 IM US CA TB 117-2013 - Compliant to the criteria certifying the absence of flame retardant chemicals (AB 2998)	AS/NZS 1530.3 AS/NZS 3837 Class 2 ASTM E84 Class B Adhered ASTM E84 Class A Unadhered BS 5852 Part 1 EN 1021 – 1/2 EN 13501, B-s2, d1, with treatment IMO FTP Code 2010: Part 8 NF D60-013 NFPA 260 ÖNORM B1/Q1 SN 198 898 5.3 with treatment UNI 9175 Classe 1 IM US CA TB 117-2013 - Compliant to the criteria certifying the absence of flame retardant chemicals (AB 2998)
APPROVED OMOLOGATO	<div><div>EU Ecolabel www.ecolabel.eu</div><div></div><div></div><div>PRODUCT CERTIFIED FOR LOW CHEMICAL EMISSIONS: UL COM1GG UL 2818 170166-420</div></div>	
CLEANING LAVAGGIO	<div></div>	



Collection / Collezione

• kvadrat

STEELCUT TRIO

from G59 to G69

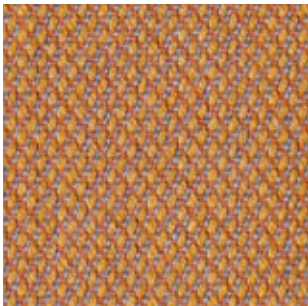
from G190 to G197

DESIGNERS Dijkmeijer & Ridolfo

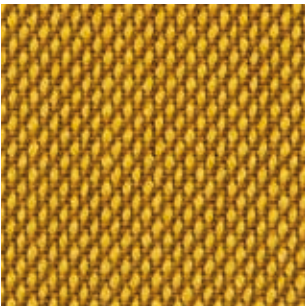
G 66



G 190



G 67



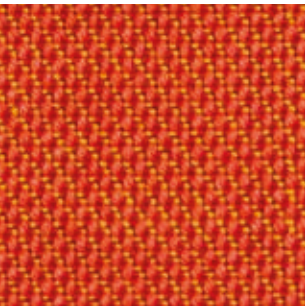
G 59



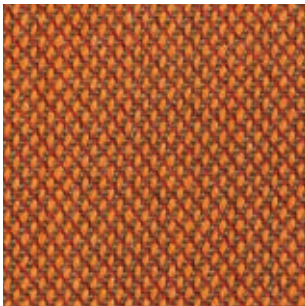
G 192



G 69



G 191



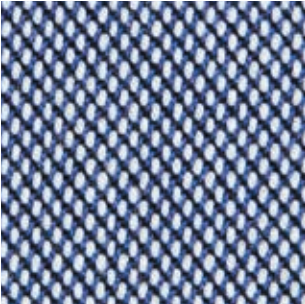
G 193



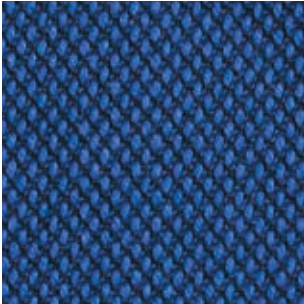
G 195



G 196



G 197



G 68



G 194



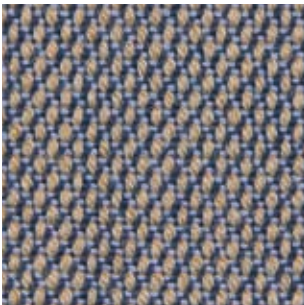
G 63



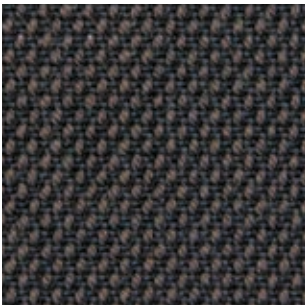
G 62



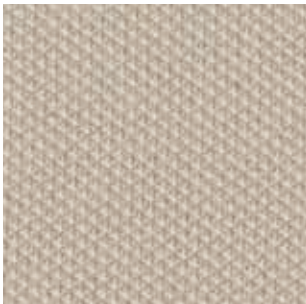
G 64



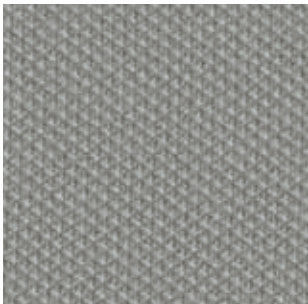
G 65



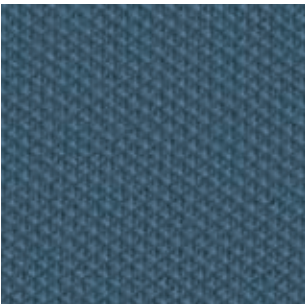
G 71



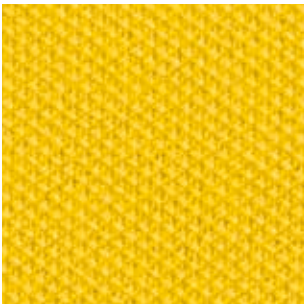
G 73



G 75



G 78



G 70



Collection / Collezione

• kvadrat

STEELCUT

from G70 to G78

DESIGNERS Dijkmeijer & Ridolfo



Fabrics
Tessuti

category G

PEDRALI®

FABRICS / TESSUTI



	G159÷G169	G250÷G258
COMPOSITION COMPOSIZIONE	97% New wool 3% Recycled nylon	97% New wool 3% Recycled nylon
WEIGHT GRAMMATURA	415 g/m² (12.22 oz/yd²)	400 g/m² (11.80 oz/yd²)
ABRASION ABRASIONE	45.000 cycles Martindale (EN ISO 12947)	45.000 cycles Martindale (EN ISO 12947)
RUBBING FASTNESS SOLIDITÀ ALLO SFREGAMENTO	Dry and Wet 4-5, scale 1-5 (ISO 105-X12)	Dry and Wet 4-5, scale 1-5 (ISO 105-X12)
PILLING	3-4, scale 1-5 (EN ISO 12945)	3-4, scale 1-5 (EN ISO 12945)
LIGHT FASTNESS SOLIDITÀ ALLA LUCE	6, scale 1-8 (ISO 105-B02)	6, scale 1-8 (ISO 105-B02)
SOUND ABSORPTION ASSORBIMENTO ACUSTICO	folded: α_w = 0.80 Class B (EN ISO 354)	folded: α_w = 0.80 Class B (EN ISO 354)
FLAME RESISTANCE RESISTENZA AL FUOCO	AS/NZS 1530.3 AS/NZS 3837 Class 2 ASTM E84 Class A Adhered ASTM E84 Class A Unadhered BS 5852 Part 1 EN 1021 – 1/2 EN 13773 Class 1 with treatment IMO FTP Code 2010: Part 8 NF D60-013 NFPA 701 with treatment NFPA 260 ÖNORM B1/Q1 SN 198 898 5.3 with treatment UNI 9175 Classe 1 IM US CA TB 117-2013 - Compliant to the criteria certifying the absence of flame retardant chemicals (AB 2998)	AS/NZS 1530.3 AS/NZS 3837 Class 1 ASTM E84 Class A Adhered ASTM E84 Class A Unadhered BS 5852 Part 1 EN 1021 – 1/2 EN 13773 Class 1 with treatment IMO FTP Code 2010: Part 8 NF D60-013 NFPA 701 with treatment ÖNORM B1/Q1 SN 198 898 5.3 with treatment UNI 9175 Classe 1 IM US CA TB 117-2013 - Compliant to the criteria certifying the absence of flame retardant chemicals (AB 2998)
APPROVED OMOLOGATO	<div><div>EU Ecolabel www.ecolabel.eu</div><div></div><div></div><div>PRODUCT CERTIFIED FOR LOW CHEMICAL EMISSIONS: UL COM/GG UL 2818 170166-420</div></div>	
CLEANING LAVAGGIO	<div></div>	



G

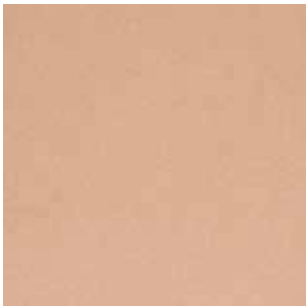
Collection / Collezione

. kvadrat

HERO
from G159 to G169

DESIGNER Patricia Urquiola

G 163



G 160



G 161



G 162



G 167



G 159



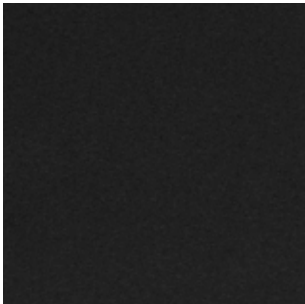
G 166



G 168



G 169



G 250



G 251



G 252



G 253



G 254



G 255



G 256



G 257



G 258



Collection / Collezione

. kvadrat

HERO HEATHER
from G250 to G258




DESIGNER Patricia Urquiola

Fabrics
Tessuti

category G | N

PEDRALI®

FABRICS / TESSUTI

	<div>G<div></div></div>		<div>N<div></div></div>	
	G220÷G226	G240÷G244	N01÷N08	N80÷N84
COMPOSITION COMPOSIZIONE	52% Cotton 22% Viscose 14% Polyacrylic 6% Linen 3% Polyester 3% Nylon	43% Viscose 17% Polyacrylic 15% New wool 9% Cotton 8% Polyester 8% Linen	58% New wool 25% Viscose 8% Linen 5% Nylon 4% Polyester	38% New wool 37% Viscose 16% Linen 9% Nylon
WEIGHT GRAMMATURA	670 g/m² (19.80 oz/yd²)	720 g/m² (21.28 oz/yd²)	420 g/m² (12.43 oz/yd²)	528 g/m² (15.57 oz/yd²)
ABRASION ABRASIONE	50.000 cycles Martindale (EN ISO 12947)	40.000 cycles Martindale (EN ISO 12947)	50.000 cycles Martindale (EN ISO 12947)	50.000 cycles Martindale (EN ISO 12947)
PILLING	4-5, scale 1-5 (EN ISO 12945)	3, scale 1-5 (EN ISO 12945)	3, scale 1-5 (EN ISO 12945)	3-4, scale 1-5 (EN ISO 12945)
LIGHT FASTNESS SOLIDITÀ ALLA LUCE	6, scale 1-8 (ISO 105-B02)	5-6, scale 1-8 (ISO 105-B02)	5, scale 1-8 (ISO 105-B02)	5-7, scale 1-8 (ISO 105-B02)
RUBBING FASTNESS SOLIDITÀ ALLO SFREGAMENTO	Dry and Wet 4-5, scale 1-5 (ISO 105-X12)	Dry and Wet 4-5, scale 1-5 (ISO 105-X12)	Dry 4-5 and Wet 3-4, scale 1-5 (ISO 105-X12)	Dry 4-5 and Wet 3-5, scale 1-5 (ISO 105-X12)
FLAME RESISTANCE RESISTENZA AL FUOCO	AS/NZS 3837 Class 2 BS 5852 Part 1 EN 1021 – 1/2 IMO FTP Code 2010: Part 8 US CA TB 117-2013 - Compliant to the criteria certifying the absence of flame retardant chemicals (AB 2998)	AS/NZS 3837 Class 2 BS 5852 Part 1 EN 1021 – 1/2 IMO FTP Code 2010: Part 8 US CA TB 117-2013 - Compliant to the criteria certifying the absence of flame retardant chemicals (AB 2998)	AS/NZS 1530.3 AS/NZS 3837 Class 2 ASTM E84 Class A Adhered ASTM E84 Class B Unadhered EN 1021 – 1/2 EN 13501, C-s1, d0, with treatment IMO FTP Code 2010: Part 8 with treatment NFPA 260 US CA TB 117-2013 - Compliant to the criteria certifying the absence of flame retardant chemicals (AB 2998)	AS/NZS 3837 Class 2 BS 5852 Part 1 EN 1021 – 1/2 UNI 9175 Classe 1 IM BS 7176 Low Hazard US CA TB 117-2013 - Compliant to the criteria certifying the absence of flame retardant chemicals (AB 2998)
APPROVED OMOLOGATO	<div><div>PRODUCT CERTIFIED FOR LOW CHEMICAL EMISSIONS: UL COM/IGG UL 2818 170166-420</div></div>		<div><div>PRODUCT CERTIFIED FOR LOW CHEMICAL EMISSIONS: UL COM/IGG UL 2818 170166-420</div></div>	
CLEANING LAVAGGIO	<div></div>		<div></div>	



G

Collection / Collezione

• **kvadrat** - SAHCO

MOSS

from G220 to G226

DESIGNER Vincent Van Duysen

G 225



G 220



G 221



G 222



G 223



G 224



G 226



Collection / Collezione

• **kvadrat** - SAHCO

SAFIRE

from G240 to G244

G 240



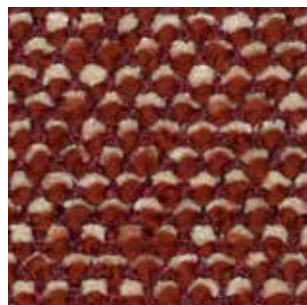
G 241



G 242



G 243



G 244



N

Collection / Collezione

• **kvadrat**

SUNNIVA

from N01 to N08

DESIGNERS Raf Simons & Fanny Aronsen

N 05



N 01



N 08



N 02



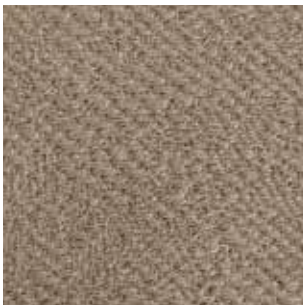
N 06



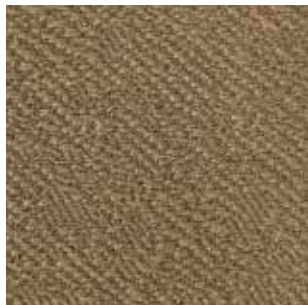
N 07



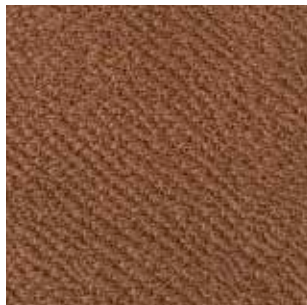
N 80



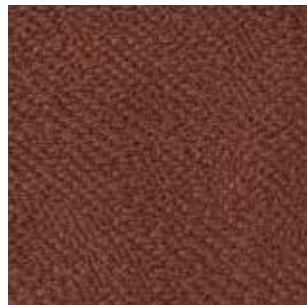
N 81



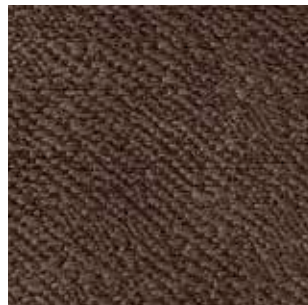
N 82



N 83



N 84






Fabrics
Tessuti

category C | G

PEDRALI®

FABRICS / TESSUTI

	<div>C<div></div></div>	<div>G<div></div></div>	
	C110÷C122	G150÷G156	G130÷G133
COMPOSITION COMPOSIZIONE	85% Wool 15% Polyamide	82% Wool 12% Rami 6% Polyamide	95% Virgin Wool 5% Polyamide
WEIGHT GRAMMATURA	330 g/m² (9.73 oz/yd²)	570 g/m² (16.81 oz/yd²)	660 g/m² (19.47 oz/yd²)
ABRASION ABRASIONE	100.000 cycles Martindale (EN ISO 12947-2)	100.000 cycles Martindale (EN ISO 12947-2)	52.000 cycles Martindale (EN ISO 12947-2)
RUBBING FASTNESS SOLIDITÀ ALLO SFREGAMENTO	Dry 4 and Wet 3-4, scale 1-5 (ISO 105-X12)	Dry 4 and Wet 3-4, scale 1-5 (ISO 105-X12)	/
PILLING	/	/	4-5, scale 1-5 (EN ISO 12945-2)
LIGHT FASTNESS SOLIDITÀ ALLA LUCE	5-7, scale 1-8 (ISO 105-B02)	5-7, scale 1-8 (ISO 105-B02)	5-8, scale 1-8 (ISO 105-B02)
SOUND ABSORPTION ASSORBIMENTO ACUSTICO	/	/	folded: $\alpha_v=0.85$ Class B (ISO 11654)
FLAME RESISTANCE RESISTENZA AL FUOCO	BS 5852 Crib 5 EN 1021 – 1/2 IMO FTP Code 2010: Part 8 UNI 9175 Classe 1 IM US CA TB 117-2013 - Compliant to the criteria certifying the absence of flame retardant chemicals (AB 2998)	BS 5852 Crib 5 EN 1021 – 1/2 IMO FTP Code 2010: Part 8 UNI 9175 Classe 1 IM US CA TB 117-2013 - Compliant to the criteria certifying the absence of flame retardant chemicals (AB 2998)	BS 5852 Part 1 BS 5852 Crib 5 with treatment DIN 4102-1 B2 EN 1021 – 1/2 EN 13501-1 FAR 25.853 (12 sec. vertical) IMO: 2014/90/EU (MED) UNI 9175 Classe 1 IM US CA TB 117-2013 - Compliant to the criteria certifying the absence of flame retardant chemicals (AB 2998)
APPROVED OMOLOGATO	<div></div>	<div></div>	<div></div>
CLEANING LAVAGGIO	<div></div>	<div></div>	<div></div>



C

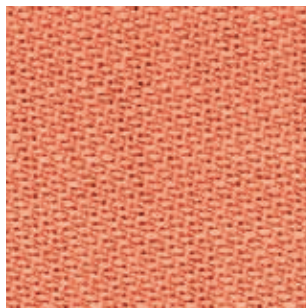
Collection / Collezione

•  **svensson**

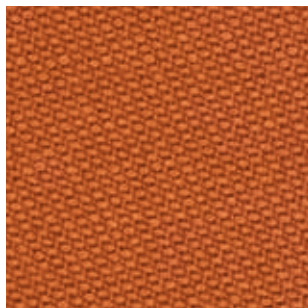
SEMI

from C110 to C122

C 111



C 112



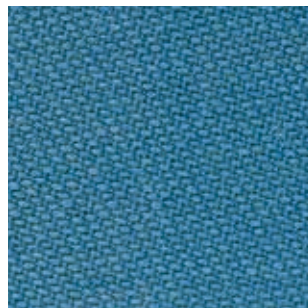
C 110



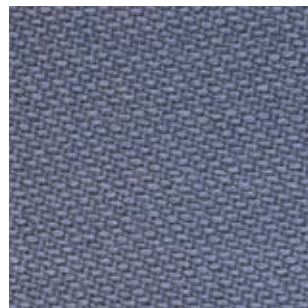
C 113



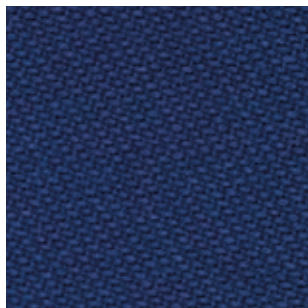
C 120



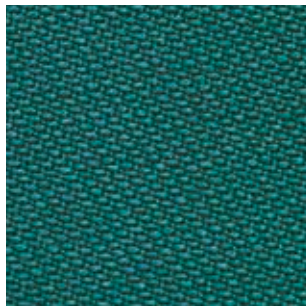
C 121



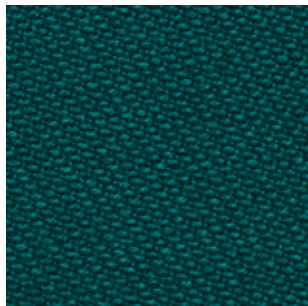
C 122



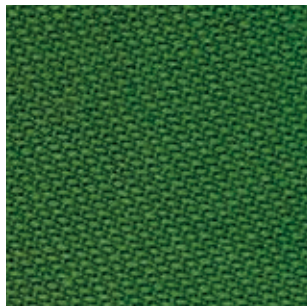
C 118



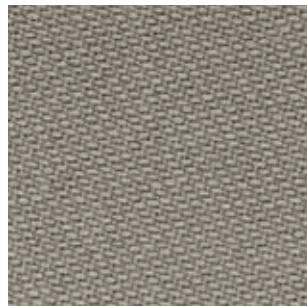
C 119



C 117



C 114



C 115



C 116



G

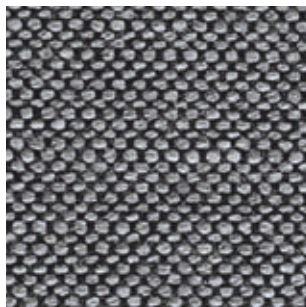
Collection / Collezione

•  **svensson**

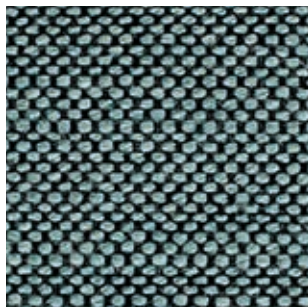
BALANCE

from G150 to G156

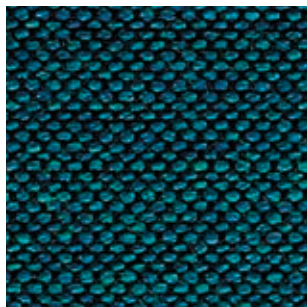
G 151



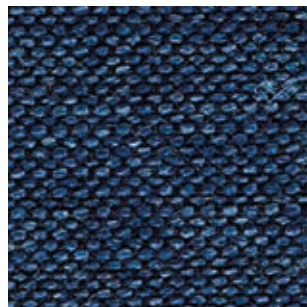
G 154



G 155



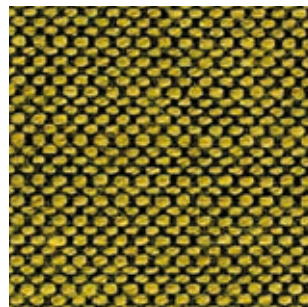
G 156



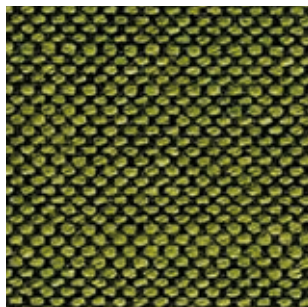
G 150



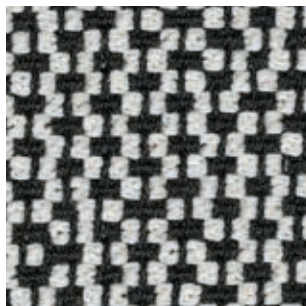
G 152



G 153



G 130



G 133



G 132



G 131




Fabrics
Tessuti

category C | D | G

PEDRALI®

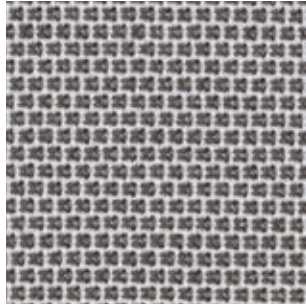
FABRICS / TESSUTI

	C 	D 	G 
	C83÷C89 C100, C101	D40÷D44	G170÷G176 G210÷G213
COMPOSITION COMPOSIZIONE	54% New Zealand Wool 44% Post-consumer recycled polyester 2% Polyamide	88% New Zealand Wool 12% Polyamide	96% Virgin Wool 4% Polyamide
WEIGHT GRAMMATURA	305 g/m² (9.06 oz/yd²)	420 g/m² (12.43 oz/yd²)	660 g/m² (13.90 oz/yd²)
ABRASION ABRASIONE	100.000 cycles Martindale (EN ISO 12947-2)	100.000 cycles Martindale (EN ISO 12947-2)	90.000 cycles Martindale (EN ISO 12947-2)
RUBBING FASTNESS SOLIDITÀ ALLO SFREGAMENTO	Dry and Wet 4-5, scale 1-5 (ISO 105-X12)	Dry and Wet 4-5, scale 1-5 (ISO 105-X12)	/
PILLING	4-5, scale 1-5 (EN ISO 12945-2)	4-5, scale 1-5 (EN ISO 12945-2)	4-5, scale 1-5 (EN ISO 12945-2)
LIGHT FASTNESS SOLIDITÀ ALLA LUCE	5-7, scale 1-8 (ISO 105-B02)	5-7, scale 1-8 (ISO 105-B02)	5, scale 1-8 (ISO 105-B02)
SOUND ABSORPTION ASSORBIMENTO ACUSTICO	/	/	folded: α_w =0.95 Class A (ISO 11654)
FLAME RESISTANCE RESISTENZA AL FUOCO	EN 1021 – 1/2 EN 1021-1 ÖNORM A3800-1 US CA TB 117-2013 - Compliant to the criteria certifying the absence of flame retardant chemicals (AB 2998)	ASTM E84 Class 2 EN 1021 – 1/2 BS 5852 Part 1 0, 1 NF D60-013 UNI 9175 Classe 1 IM US CA TB 117-2013 - Compliant to the criteria certifying the absence of flame retardant chemicals (AB 2998)	BS 5852 Part 1 DIN 4102-1 B2 with treatment EN 13501-1 with treatment EN 1021 – 1/2 FAR 25.853 (12 sec. vertical) with treatment IMO: 2014/90/EU (MED) UNI 9175 Classe 1 IM US CA TB 117-2013 - Compliant to the criteria certifying the absence of flame retardant chemicals (AB 2998)
APPROVED OMOLOGATO			
CLEANING LAVAGGIO			

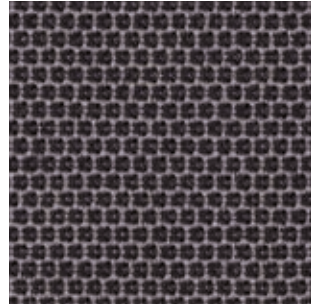


C

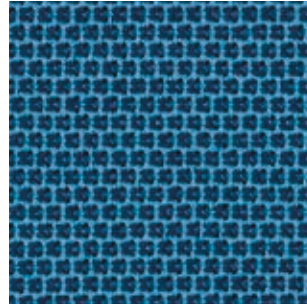
C 101



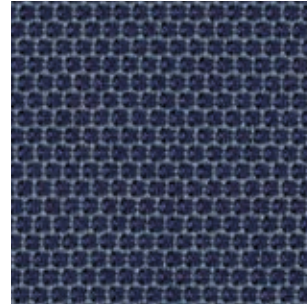
C 86



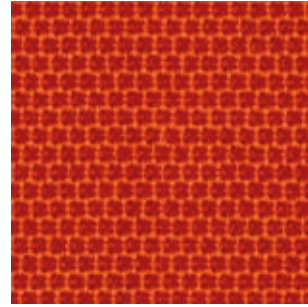
C 83



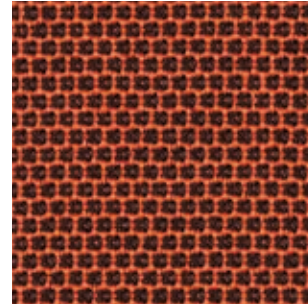
C 100



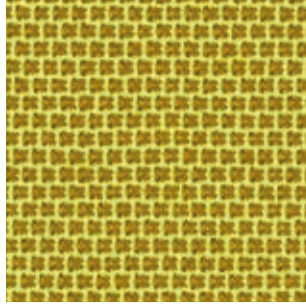
C 85



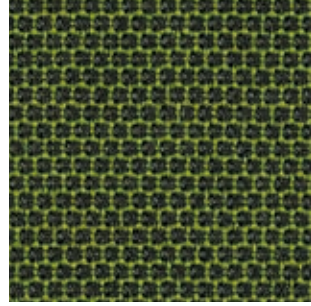
C 89



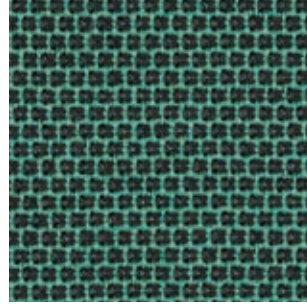
C 87



C 84

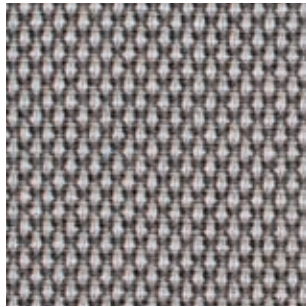


C 88

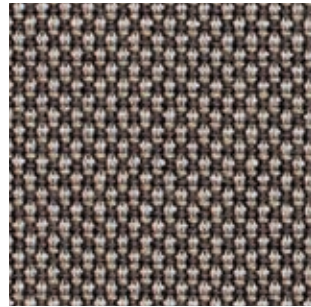


D

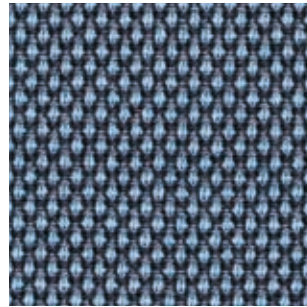
D 40



D 41



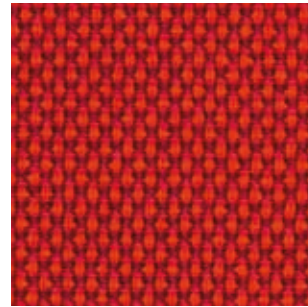
D 43



D 44

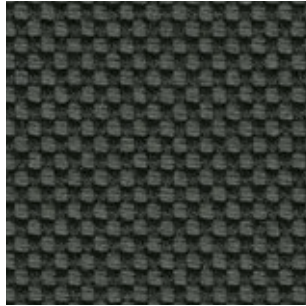


D 42

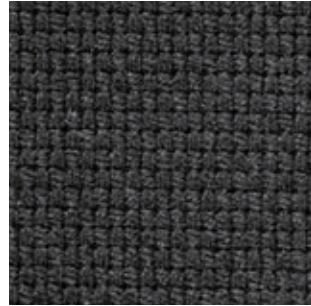


G

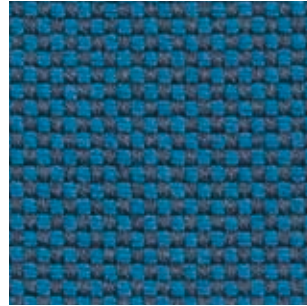
G 175



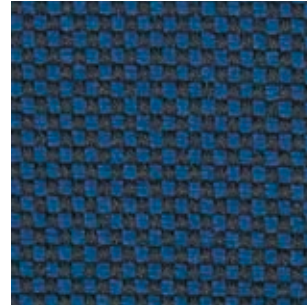
G 176



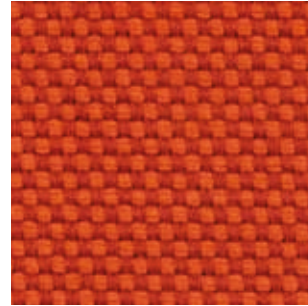
G 173



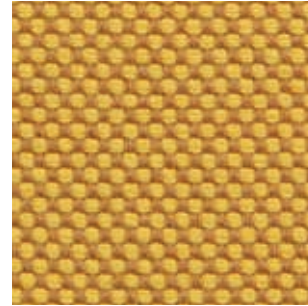
G 174



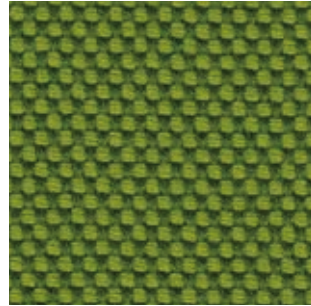
G 170



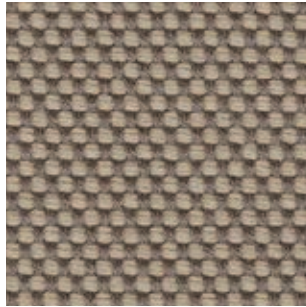
G 171



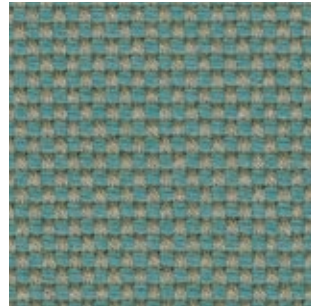
G 172



G 211



G 210



G 213



G 212








Fabrics
Tessuti

category G | H

PEDRALI®

FABRICS / TESSUTI

	<div>G<div></div></div>	<div>H<div></div></div>	
	G200÷G206	G140÷G146	H120÷H127
COMPOSITION COMPOSIZIONE	92% New wool 8% Nylon	45% Recycled wool 45% New wool 10% Nylon	90% New wool 10% Nylon
WEIGHT GRAMMATURA	370 g/m² (10.95 oz/yd²)	385 g/m² (11.38 oz/yd²)	300 g/m² (8.85 oz/yd²)
ABRASION ABRASIONE	80.000 cycles Martindale (EN ISO 12947)	100.000 cycles Martindale (EN ISO 12947)	100.000 cycles Martindale (EN ISO 12947)
RUBBING FASTNESS SOLIDITÀ ALLO SFREGAMENTO	Dry and Wet 5, scale 1-5 (ISO 105-X12)	Dry and Wet 4-5, G140-G142-G144: Dry 4-5 and Wet 4 scale 1-5 (ISO 105-X12)	Dry 4-5 and Wet 4, scale 1-5 (ISO 105-X12)
PILLING	4, scale 1-5 (EN ISO 12945)	4, scale 1-5 (EN ISO 12945)	4, scale 1-5 (EN ISO 12945)
LIGHT FASTNESS SOLIDITÀ ALLA LUCE	6-7, scale 1-8 (ISO 105-B02)	6-7, G140-G142-G144: 6 scale 1-8 (ISO 105-B02)	6, scale 1-8 (ISO 105-B02)
SOUND ABSORPTION ASSORBIMENTO ACUSTICO	/	folded: α_w =0.75 Class C (EN ISO 354)	folded: α_w =0.80 Class B (EN ISO 354)
FLAME RESISTANCE RESISTENZA AL FUOCO	AS/NZS 1530.3 AS/NZS 3837 Class 2 BS 5852 Part 1 EN 1021 – 1/2 IMO FTP Code 2010: Part 8 NF D60-013 SN 198 898 5.3 with treatment UNI 9175 Classe 1 IM US CA TB 117-2013 - Compliant to the criteria certifying the absence of flame retardant chemicals (AB 2998)	AS/NZS 1530.3 AS/NZS 3837 Class 2 BS 5852 Part 1 EN 1021 – 1/2 EN 13501, B-s2, d0, with treatment IMO FTP Code 2010: Part 8 NF D60-013 SN 198 898 5.3 with treatment ÖNORM B1/Q1 UNI 9175 Classe 1 IM US CA TB 117-2013 - Compliant to the criteria certifying the absence of flame retardant chemicals (AB 2998) only for G141-G143-G145-G146: ASTM E84 Class A Unadhered	AS/NZS 1530.3 AS/NZS 3837 Class 2 ASTM E84 Class A Adhered ASTM E84 Class A Unadhered BS 5852 Part 1 EN 1021 – 1/2 EN 13501, B-s2, d0, with treatment GB 50222 B1 with treatment IMO FTP Code 2010: Part 7 with treatment IMO FTP Code 2010: Part 8 NF D60-013 NFPA 260 ÖNORM B1/Q1 SN 198 898 5.3 with treatment UNI 9175 Classe 1 IM US CA TB 117-2013 - Compliant to the criteria certifying the absence of flame retardant chemicals (AB 2998)
APPROVED OMOLOGATO	<div><div></div><div></div><div></div><div>PRODUCT CERTIFIED FOR LOW CHEMICAL EMISSIONS: UL COM/GG UL 2818 170166-420</div></div>		
CLEANING LAVAGGIO	<div></div>		



G

Collection / Collezione

. kvadrat

JAALI

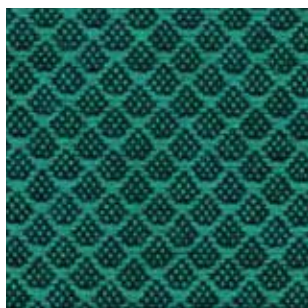
from G200 to G206

DESIGNER Doshi Levien

G 204



G 205



G 203



G 206



G 200



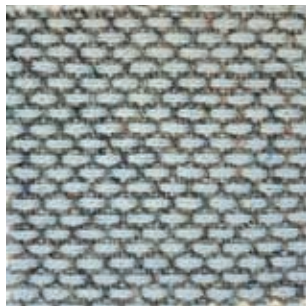
G 201



G 202



G 143



G 145



G 144



G 146



G 140



G 141



G 142



H

Collection / Collezione

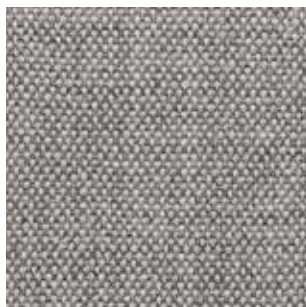
. kvadrat

REMIX

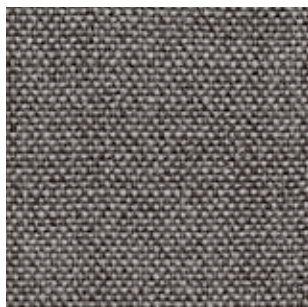
from H120 to H127

DESIGNER Giulio Ridolfo

H 120



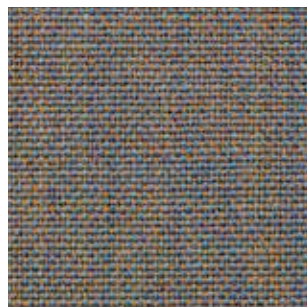
H 121



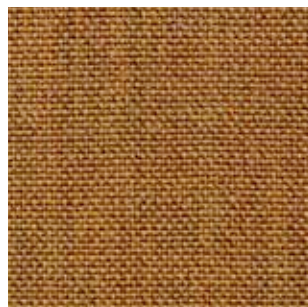
H 123



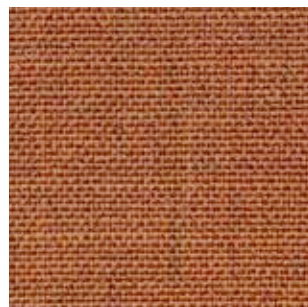
H 122



H 125



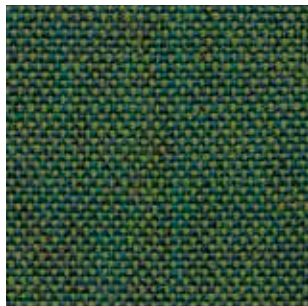
H 124



H 126



H 127



Fabrics

Tessuti

category D | H | N

PEDRALI®

FABRICS / TESSUTI

	D	H	N 
	D120÷D123	H140÷H143	N30÷N39, N50, N51
COMPOSITION COMPOSIZIONE	22% Acrylic 22% Virgin Wool 22% Polyester 14% Viscose 13% Cotton 7% Linen	35% Wool 35% Acrylic 23% Polyester 7% Cotton	65% Wool 32% Cotton 3% Polyamide
WEIGHT GRAMMATURA	580 g/m² (17.11 oz/yd²)	414 g/m² (12.21 oz/yd²)	750 g/m² (22.16 oz/yd²)
ABRASION ABRASIONE	30.000 cycles Martindale (EN ISO 12947-2)	40.000 cycles Martindale (EN ISO 12947-2)	80.000 cycles Martindale (EN ISO 12947-2)
PILLING	4, scale 1-5 (EN ISO 12945-2 to 5.000 rubs)	3-4, scale 1-5 (EN ISO 12945-2 to 5.000 rubs)	4-5, scale 1-5 (EN ISO 12945 to 5.000 rubs)
RUBBING FASTNESS SOLIDITÀ ALLO SFREGAMENTO	Dry 4-5 and Wet 3, scale 1-5 (ISO 105-X12)	Dry 4-5 and Wet 3, scale 1-5 (ISO 105-X12)	Dry 4-5 and Wet 3-4, scale 1-5 (ISO 105-X12)
LIGHT FASTNESS SOLIDITÀ ALLA LUCE	5-6, scale 1-8 (ISO 105-B02)	5-6, scale 1-8 (ISO 105-B02)	4-5, scale 1-8 (ISO 105-B02)
FLAME RESISTANCE RESISTENZA AL FUOCO	BS 5852 Part 1 US CA TB 117-2013 - Compliant to the criteria certifying the absence of flame retardant chemicals (AB 2998)	EN 1021-1 BS 5852 Part 1 US CA TB 117-2013 - Compliant to the criteria certifying the absence of flame retardant chemicals (AB 2998)	BS 5852 Part 1 BS 5852 Crib 5 EN 1021 - 1/2 UNI 9175 Classe 1 IM US CA TB 117-2013 - Compliant to the criteria certifying the absence of flame retardant chemicals (AB 2998)
APPROVED OMOLOGATO	/		/
CLEANING LAVAGGIO	    		    

D

D 120



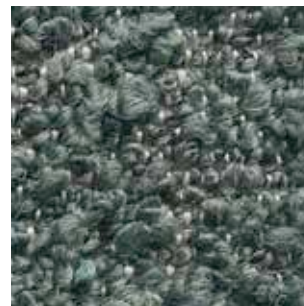
D 121



D 122



D 123



H

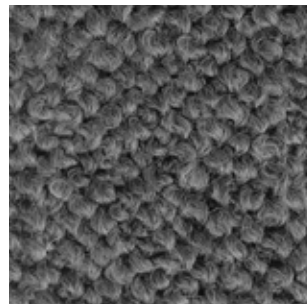
H 143



H 140



H 141



H 142



N

Collection / Collezione

• DEDAR

A PERFECT FLOWER

from N30 to N39, N50, N51

N 30



N 31



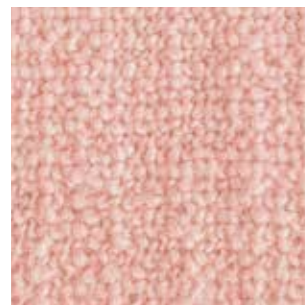
N 32



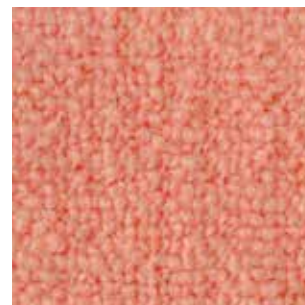
N 51



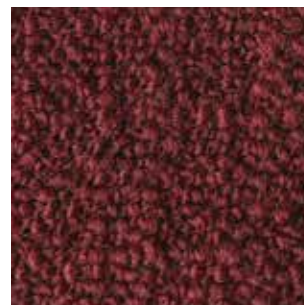
N 33



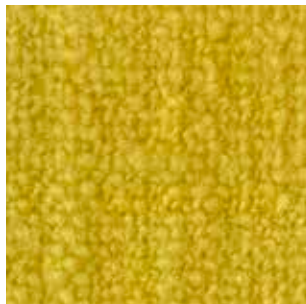
N 34



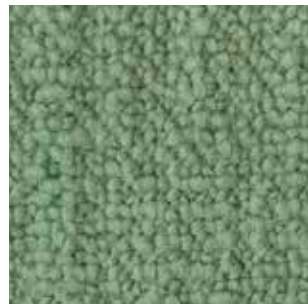
N 39



N 35



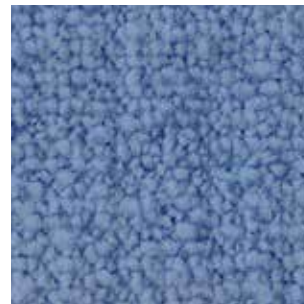
N 36



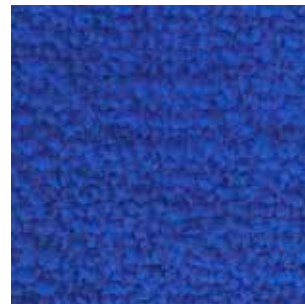
N 50



N 37



N 38





Fabrics
Tessuti

category D | N

PEDRALI®

FABRICS / TESSUTI

only for outdoor collections cushions / solo per cuscini delle collezioni outdoor

D		N		
	D80÷D91	D130÷D133	D100÷D105	N40÷N45
COMPOSITION COMPOSIZIONE	100% Acrylic	100% Polypropylene	100% Polypropylene	100% Acrylic
WEIGHT GRAMMATURA	290 g/m² (8.55 oz/yd²)	470 g/m² (13.86 oz/yd²)	430 g/m² (12.68 oz/yd²)	390 g/m² (11.59 oz/yd²)
ABRASION ABRASIONE	> 20.000 cycles, Martindale (EN ISO 5470-2)	40.000 cycles, Martindale (EN ISO 12947-2)	50.000 cycles, Martindale (EN ISO 12947-2)	24.000 cycles, Martindale (EN ISO 12947-2)
RUBBING FASTNESS SOLIDITÀ ALLO SFREGAMENTO	/	Dry 4-5 and Wet 4, scale 1-5 (ISO 105-X12)	Dry and Wet 4-5, scale 1-5 (ISO 105-X12)	Dry and Wet 4-5, scale 1-5 (ISO 105-X12)
PILLING	/	4-5, scale 1-5 (EN ISO 12945-2 to 5.000 rubs)	4-5, scale 1-5 (EN ISO 12945-2)	3-4, scale 1-5 (EN ISO 12945 to 5.000 rubs)
LIGHT FASTNESS SOLIDITÀ ALLA LUCE	8, scale 1-8 (ISO 105-B04)	7-8, scale 1-8 (ISO 105-B02)	7, scale 1-8 (ISO 105-B02)	6-7, scale 1-8 (ISO 105-B02)
WATER FASTNESS SOLIDITÀ ALL'ACQUA	8, scale 1-8 (ISO 105-B04)	7, scale 1-8 (ISO 105-B04)	>7, scale 1-8 (ISO 105-B04)	7-8, scale 1-8 (ISO 105-B04)
FLAME RESISTANCE RESISTENZA AL FUOCO	/	BS 5852 Part 1 US CA TB 117-2013 - Compliant to the criteria certifying the absence of flame retardant chemicals (AB 2998)	US CA TB 117-2013 - Compliant to the criteria certifying the absence of flame retardant chemicals (AB 2998)	US CA TB 117-2013 - Compliant to the criteria certifying the absence of flame retardant chemicals (AB 2998)
APPROVED OMOLOGATO				
CLEANING LAVAGGIO				

only for outdoor collections cushions / solo per cuscini delle collezioni outdoor



D

Collection / Collezione

• PEDRALI®

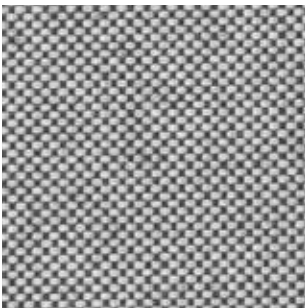
FLORIDA

from D80 to D91

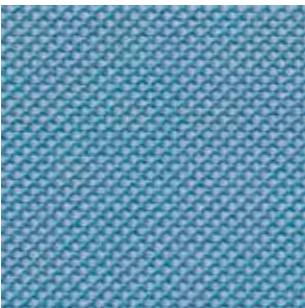
D 80



D 81



D 82



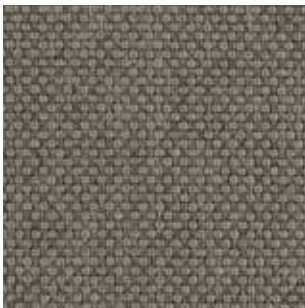
D 83



D 84



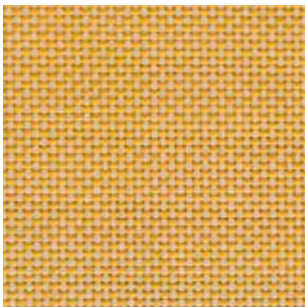
D 85



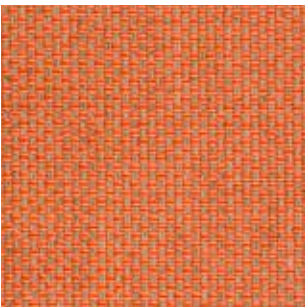
D 86



D 87



D 88



D 89



D 90



D 91



D 130



D 132



D 131



D 133



Collection / Collezione

• PEDRALI®

ZEFIRO

from D100 to D105

D 100



D 101



D 105



D 102



D 103



D 104



N

Collection / Collezione

• DEDAR®

STRANGE LOVES

from N40 to N45

N 40



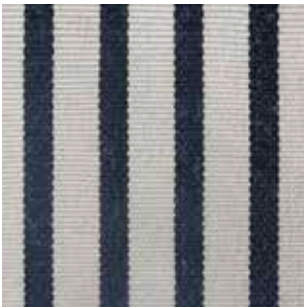
N 41



N 42



N 45



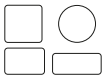
N 44



N 43



only for the cushions of the items
solo per cuscini degli articoli



accessory cushions

3001

3002

3004

3005



Fabrics

Tessuti

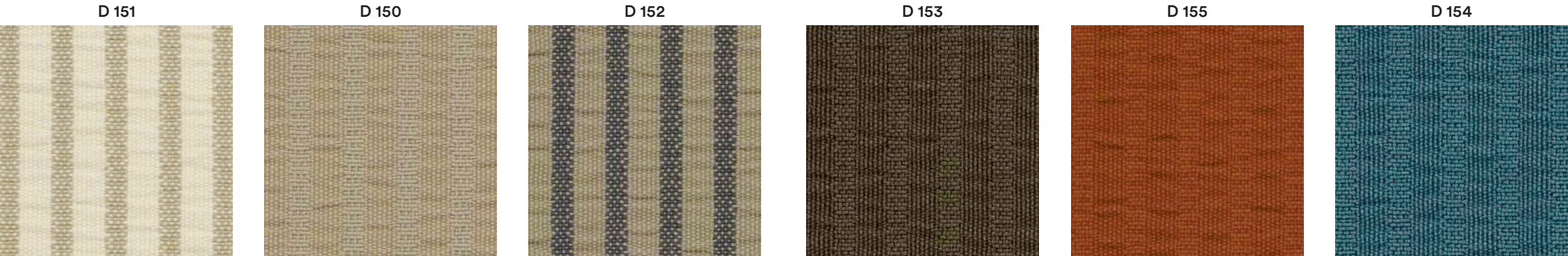
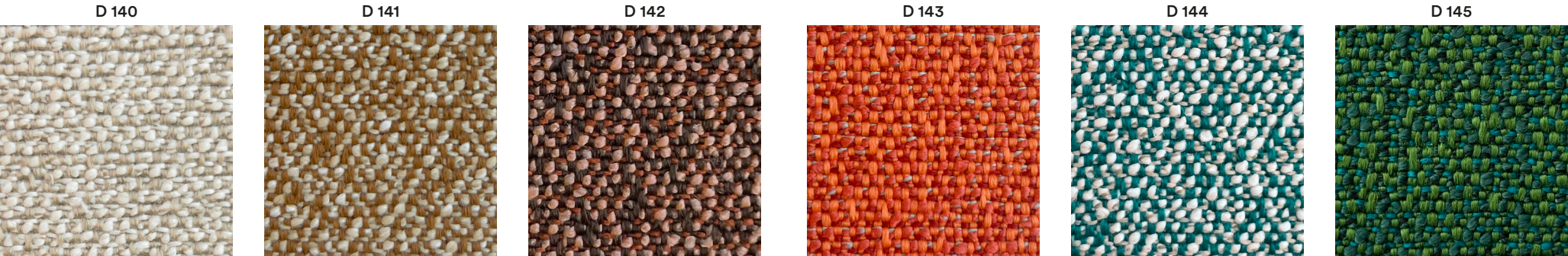
category D | G

PEDRALI®

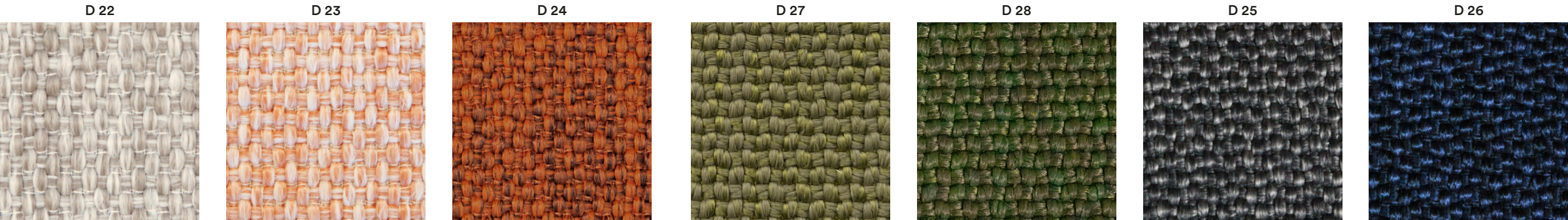
FABRICS / TESSUTI

only for outdoor collections cushions / solo per cuscini delle collezioni outdoor

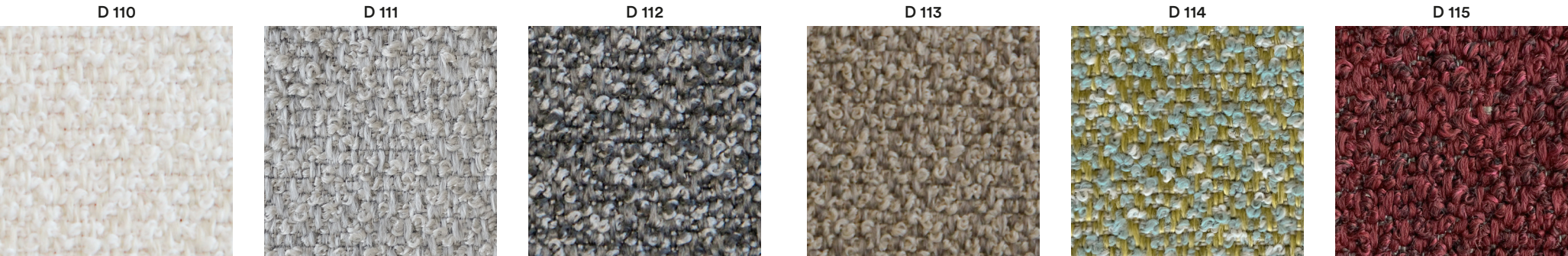
	D				G	
	D140÷D145	D22÷D28	D150÷D155	D110÷D115	G270÷G272	G260÷G263
COMPOSITION COMPOSIZIONE	100% Polypropylene	100% Polypropylene	100% Polypropylene	88% Polypropylene 12% Polyester	100% Polypropylene	100% Polyester
WEIGHT GRAMMATURA	520 g/m² (15.34 oz/yd²)	614 g/m² (18.11 oz/yd²)	458 g/m² (13.51 oz/yd²)	470 g/m² (13.86 oz/yd²)	392 g/m² (11.56 oz/yd²)	592 g/m² (17.46 oz/yd²)
ABRASION ABRASIONE	62.000 cycles, Martindale (EN ISO 13936-2)	> 30.000 cycles, Martindale (EN ISO 12947-2)	35.000 cycles, Martindale (EN ISO 12947-2)	30.000 cycles, Martindale (EN ISO 12947-2)	28.000 cycles, Martindale (EN ISO 12947-2)	26.000 cycles, Martindale (EN ISO 12947-2)
RUBBING FASTNESS SOLIDITÀ ALLO SFREGAMENTO	Dry and Wet 4-5, scale 1-5 (ISO 105-X12)	Dry and Wet 4-5, scale 1-5 (ISO 105-X12)	Dry and Wet 5, scale 1-5 (ISO 105-X12)	Dry 4-5 and Wet 4, scale 1-5 (ISO 105-X12)	Dry and Wet 4-5, scale 1-5 (ISO 105-X12)	Dry 4-5 and Wet 5, scale 1-5 (ISO 105-X12)
PILLING	4-5, scale 1-5 (EN ISO 12945-2 to 5.000 rubs)	5, scale 1-5 (EN ISO 12945-2 to 5.000 rubs)	5, scale 1-5 (EN ISO 12945-2)	4, scale 1-5 (EN ISO 12945-2 to 5.000 rubs)	5, scale 1-5 (EN ISO 12945-2)	4-5, scale 1-5 (EN ISO 12945-2)
LIGHT FASTNESS SOLIDITÀ ALLA LUCE	7, scale 1-8 (ISO 105-B02)	7, scale 1-8 (ISO 105-B02)	7, scale 1-8 (ISO 105-B02)	7-8, scale 1-8 (ISO 105-B02)	7, scale 1-8 (ISO 105-B02)	7-8, scale 1-8 (ISO 105-B02)
WATER FASTNESS SOLIDITÀ ALL'ACQUA	7, scale 1-8 (ISO 105-B04)	5, scale 1-5 (ISO 105-E01)	8, scale 1-8 (ISO 105-B04)	7, scale 1-8 (ISO 105-B04)	4-5, scale 1-5 (ISO 105-E03) 5, scale 1-5 (ISO 105-E02)	4-5, scale 1-5 (ISO 105-E03) (ISO 105-E02)
FLAME RESISTANCE RESISTENZA AL FUOCO	BS 5852 Part 1	BS 5852 Part 1	BS 5852 Part 0	BS 5852 Part 0	BS 5852 Source 0	BS 5852 Part 1-2 DIN 4102 B1 NFP92-503-504-505 M
	US CA TB 117-2013 - Compliant to the criteria certifying the absence of flame retardant chemicals (AB 2998)					
APPROVED OMOLOGATO	/				/	
CLEANING LAVAGGIO						



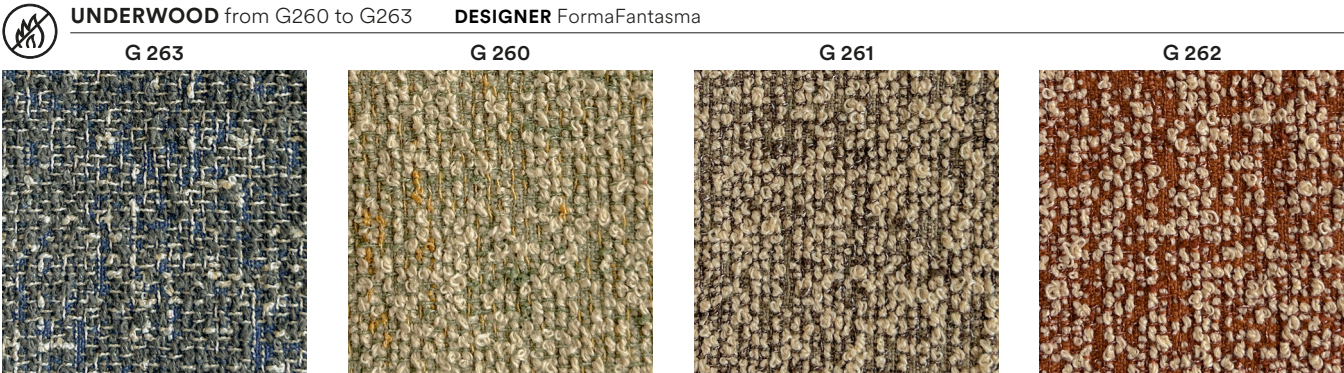
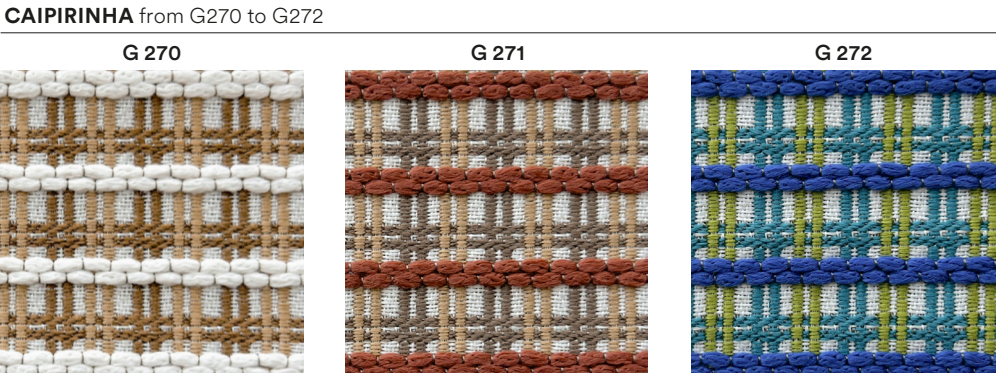
Collection / Collezione
• **PEDRALI**
BREZZA
from D22 to D28



Collection / Collezione
• **PEDRALI**
SAND
from D110 to D115



Collection / Collezione
• **RUBELLI**
CAIPIRINHA
from G270 to G272
UNDERWOOD
from G260 to G263





Simil Leather

Finta Pelle

category H

PEDRALI®

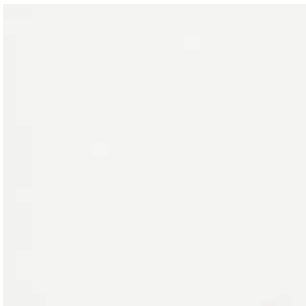
SIMIL LEATHER / FINTA PELLE

	<div>H</div>
	H20TB÷H35TB H100TB÷H108TB
COMPOSITION COMPOSIZIONE	63% Polyurethane 29% Cotton 8% Polyester
WEIGHT GRAMMATURA	480 g/m² (14.16 oz/yd²)
ABRASION ABRASIONE	150.000 cycles Martindale (EN ISO 12947-2)
RUBBING FASTNESS SOLIDITÀ ALLO SFREGAMENTO	/
LIGHT FASTNESS SOLIDITÀ ALLA LUCE	5-6, scale 1-8 (ISO 105-B02)
FLAME RESISTANCE RESISTENZA AL FUOCO	BS 5852 Part 1 BS 5852 Crib 5 EN 1021 – 1/2 IMO FTP Code 2010 ÖNORM B 3825 UNI 9175 Classe 1 IM US CA TB 117-2013 - Compliant to the criteria certifying the absence of flame retardant chemicals (AB 2998)
CLEANING LAVAGGIO	



H

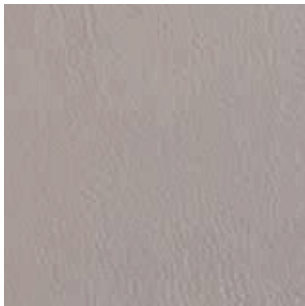
H 20 TB



H 100 TB



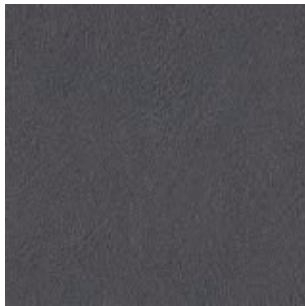
H 102 TB



H 101 TB



H 35 TB



H 26 TB



H 34 TB



H 27 TB



H 31 TB



H 103 TB



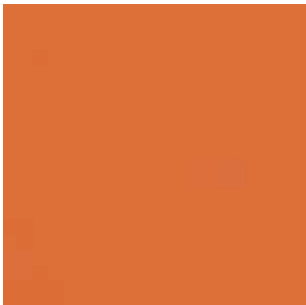
H 104 TB



H 28 TB



H 24 TB



H 22 TB



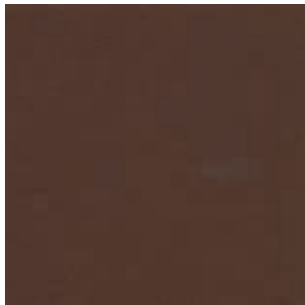
H 23 TB



H 32 TB



H 29 TB



H 30 TB



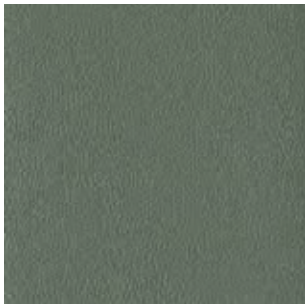
H 21 TB



H 105 TB



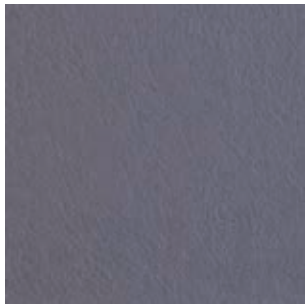
H 33 TB



H 106 TB



H 107 TB



H 108 TB



Leather

Pelle

category P

PEDRALI®

LEATHER / PELLE

P

PBI, PLA, PGC, PSA, PGA, PBE, PGN, PTA, PTE, PRO, PGR, PMA, PNE

COMPOSITION
COMPOSIZIONE

Mid grain leather
Pelle mezzo fiore

WEIGHT
GRAMMATURA

0.9-1.1 mm
(0.035-0.043 in)

RUBBING FASTNESS
SOLIDITÀ ALLO SFREGAMENTO

Dry (500 Cycles)
and Wet (250 Cycles) ≥4
(EN ISO 11640:1998)

LIGHT FASTNESS
SOLIDITÀ ALLA LUCE

≥5
(ISO 105 B02) (MET.5)

FLAME RESISTANCE
RESISTENZA AL FUOCO

BS 5852:1979
BS EN 1021-1-2:2006
US CA TB 117-2013 - Compliant to
the criteria certifying the absence
of flame retardant chemicals (AB 2998)

APPROVED
OMOLOGATO



CLEANING
LAVAGGIO

Clean with a damp cloth using
water. Do not use detergents,
solvents, bleached, abrasives.
Pulire con un panno umido d'acqua.
Non usare detersivi, solventi,
candeggianti, abrasivi.

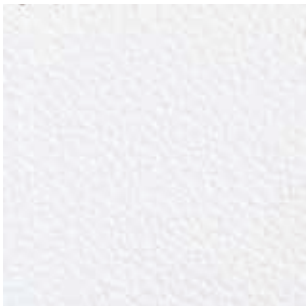
P

Collection / Collezione

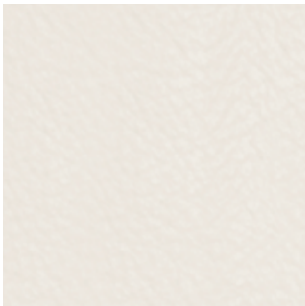


LINEA

PBI



PLA



PGC



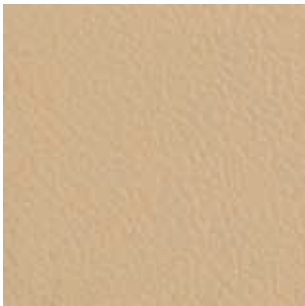
PSA



PGA



PBE



PGN



PTA



PTE



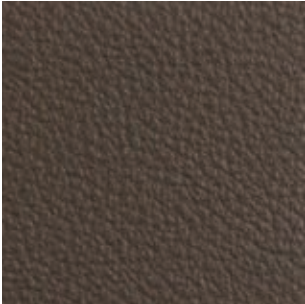
PRO



PGR



PMA



PNE



Hard leather

Cuoio

category F

GENUINE AND REGENERATED
NATURALE E RIGENERATO

PEDRALI®

HARD LEATHER / CUOIO

F

F01-F09

COMPOSITION
COMPOSIZIONE

Genuine hard leather, tanned with vegetable substances
Cuoio naturale, conciato con sostanze vegetali

WEIGHT
GRAMMATURA

2 mm
(0.079 in)

RUBBING FASTNESS
SOLIDITÀ ALLO SFREGAMENTO

Satisfactory up to maximum 700 abrasions in humid environment and 1000 abrasions in dry environment
Soddisfacente sino a max 700 abrasioni all'umido e 1000 abrasioni al secco

LIGHT FASTNESS
SOLIDITÀ ALLA LUCE

/

FLAME RESISTANCE
RESISTENZA AL FUOCO

/

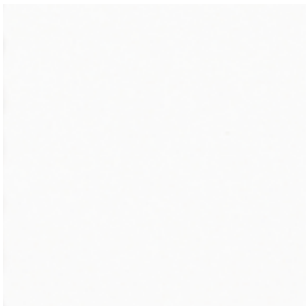
CLEANING
LAVAGGIO

Clean with a damp cloth using water
Pulire con un panno umido d'acqua

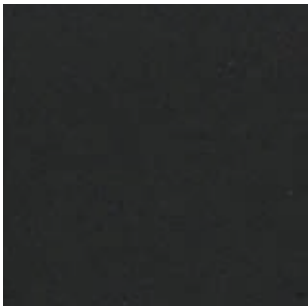
F

GENUINE HARD LEATHER
CUOIO NATURALE

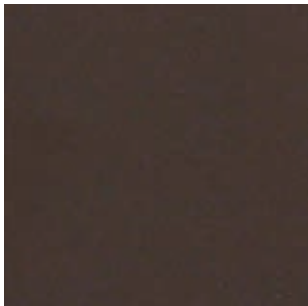
F 07



F 05



F 01



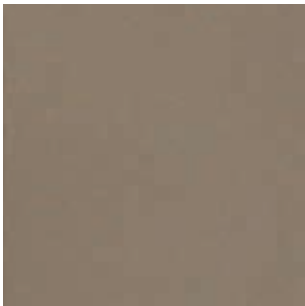
F 06



F 09



F 08



F 03



F 04



only for collections / solo per collezioni



Fox



Gliss



Inga



Kuadra



Kuadra XL



Malmö



Mood

Velvet

Velluto


category G

PEDRALI®

VELVET / VELLUTO

G

G230÷G239

COMPOSITION COMPOSIZIONE	100% Cotton
WEIGHT GRAMMATURA	540 g/m² (15.93 oz/yd²)
ABRASION ABRASIONE	70.000 cycles Martindale (EN ISO 12947-2)
RUBBING FASTNESS SOLIDITÀ ALLO SFREGAMENTO	Dry and Wet 4-5, scale 1-5 (ISO 105-X12)
PILLING	5, scale 1-5 (EN ISO 12945-2)
LIGHT FASTNESS SOLIDITÀ ALLA LUCE	4-5, scale 1-8 (ISO 105-B02)
SOUND ABSORPTION ASSORBIMENTO ACUSTICO	folded: α _w =0.75 (EN ISO 354)
FLAME RESISTANCE RESISTENZA AL FUOCO	BS 5852 Part 1 US CA TB 117-2013 - Compliant to the criteria certifying the absence of flame retardant chemicals (AB 2998)
APPROVED OMOLOGATO	/
CLEANING LAVAGGIO	

G

G 230



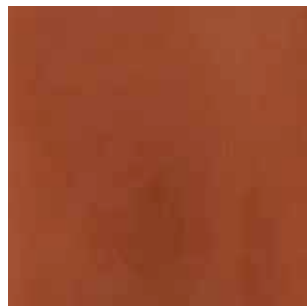
G 231



G 232



G 233



G 234



G 235



G 236



G 237



G 238



G 239

